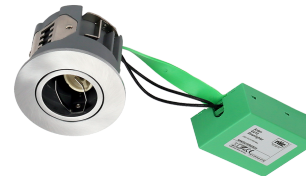


DATASHEET

ARDEN

Arden GU10 Round Satin Chrome Bezel

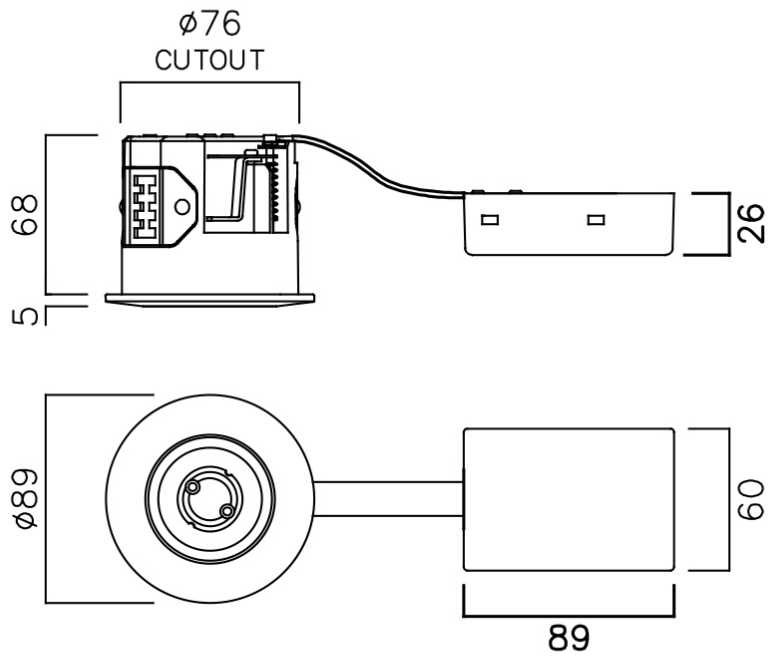
Round Satin Chrome Bezel
 5-Pole Connector Block For Easy Install



GENERAL INFORMATION	
Product Code	NAN/GU10/RO/SCH
Product Range	Downlights
Product Category	Downlights
IP Rating	44 to rear
IK Rating	N/A
Warranty	5 Years Core
DIMENSION/WEIGHT	
Dimensions Circular (DIA x H) (mm)	DIA=Ø89, H=73
Dimensions Square/Rectangular (L x W x H) (mm)	L=0, W=0, H=N/A
Cut-out Size (mm)	Ø76
Product Weight (Kg)	0.3
CONSTRUCTION	
Body Material	Aluminium / Nylon
Body Colour	Satin Chrome RAL9006
Optical Material	N/A
Optical Finish	N/A
Termination	5x2x2.5mm sq. Push In Terminal
Driver - Integal or Remote	N/A
PACKAGING	
Carton Dimensions (mm)	N/A
Quantity per Outer Carton	N/A
Total Weight incl. Carton (Kg)	N/A

LUMINAIRE PERFORMANCE	
Energy Rating	N/A
Luminaire Lumens (lm)	N/A
Power Consumption (W)	Check lamp data
LED Lumens (lm/W)	N/A
Efficacy (l.lm/c.W)	-
Operating Temp. (Min/Max)	-20°C to 25°C
LIGHT SOURCE	
Type	Not supplied
Correlated Colour Temp.	N/A
Colour Rendering Index (CRI)	N/A
Lumen Depreciation	N/A
SDCM	N/A
ELECTRICAL INPUT	
VOLTAGE (V)	220-240V AC
Operating Frequency	50
In Rush	N/A
Drivers per MCB*	N/A
Class	Class 2
Power Factor	N/A
Cable Entry	Connector Block
ELECTRICAL OUTPUT	
Forward Current (mA)	N/A
Forward Voltage (Vf)	N/A
EMERGENCY DATA	
Mode of Operation	N/A
Battery Duration	N/A
Battery Type	N/A
Battery Specification	N/A
Ballast Lumen Factor (BLF)	N/A
DIMMING	
DALI	N/A
OTHER	N/A
Switch Dim	N/A
Corridor Function	N/A
SENSORS	
Microwave	N/A
PIR	N/A
STANDARDS/APPROVALS	
CE Marked	Yes
Certificate of Conformity	Yes
Accreditations	N/A
BARCODE	
EAN NUMBER	5055943056039

* GUIDE ONLY



ROUND BEZEL