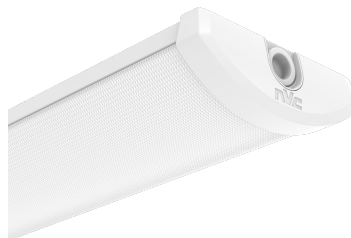


DATASHEET

CORNELL

Cornell 31-52W LED 1540mm 830-840

Robust Steel Body With Strong PC Opal Diffuser
 5-Pole Terminal Block
 UKCA CE Approved

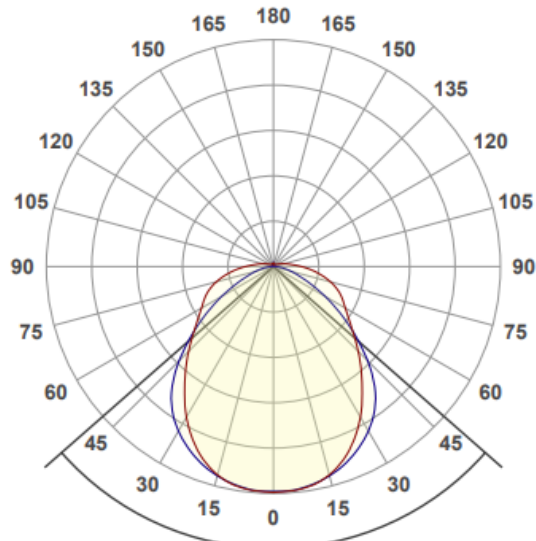
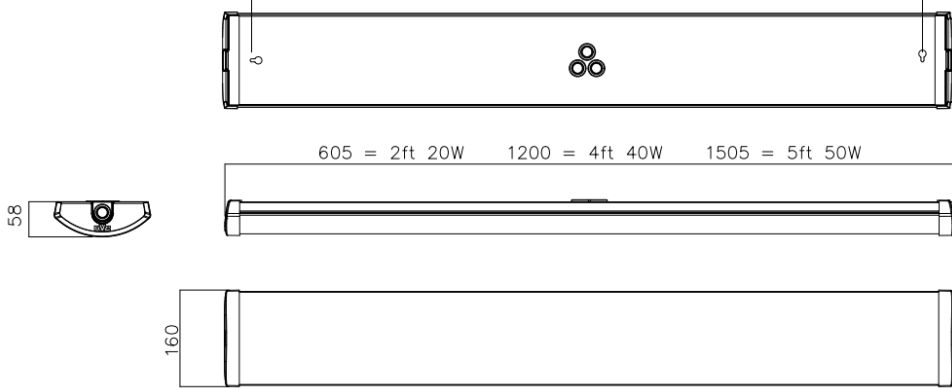


GENERAL INFORMATION	
Product Code	NCR31-52/830-840
Product Range	Surface Mount
Product Category	Surface Mount
IP Rating	44
IK Rating	IK08
Warranty	7 Years
DIMENSION/WEIGHT	
Dimensions Circular (DIA x H) (mm)	DIA=N/A, H=N/A
Dimensions Square/Rectangular (L x W x H) (mm)	L=1506, W=160, H=58
Cut-out Size (mm)	N/A
Product Weight (Kg)	4.5
CONSTRUCTION	
Body Material	Steel
Body Colour	White RAL9016
Optical Material	N/A
Optical Finish	N/A
Termination	5x2x2.5mm sq. Push In Terminal
Driver - Intergal or Remote	Integral
PACKAGING	
Carton Dimensions (mm)	N/A
Quantity per Outer Carton	N/A
Total Weight incl. Carton (Kg)	2.9

LUMINAIRE PERFORMANCE	
Energy Rating	C
Luminaire Lumens (lm)	5188 / 6581 / 7879 / 9182
Power Consumption (W)	30.6 / 37.2 / 44.7 / 52.2
LED Lumens (lm/W)	N/A
Efficacy (Llm/c.W)	169 / 177 / 176 / 176
Operating Temp. (Min/Max)	-20°C to 25°C
LIGHT SOURCE	
Type	LED
Correlated Colour Temp.	3000 / 4000
Colour Rendering Index (CRI)	>80
Lumen Depreciation	L90 100000
SDCM	<3
ELECTRICAL INPUT	
VOLTAGE (V)	220-240V AC
Operating Frequency	50
In Rush	16A @ 100us
Drivers per MCB*	B10=17 B16=28 C10=29 C16=48
Class	Class 1
Power Factor	>0.95
Cable Entry	Ends / Rear
ELECTRICAL OUTPUT	
Forward Current (mA)	-
Forward Voltage (Vf)	N/A
EMERGENCY DATA	
Mode of Operation	N/A
Battery Duration	N/A
Battery Type	N/A
Battery Specification	N/A
Ballast Lumen Factor (BLF)	N/A
DIMMING	
DALI	N/A
OTHER	N/A
Switch Dim	N/A
Corridor Function	N/A
SENSORS	
Microwave	N/A
PIR	N/A
STANDARDS/APPROVALS	
CE Marked	Yes
Certificate of Conformity	Yes
Accreditations	N/A
BARCODE	
EAN NUMBER	5056673217592
E NUMBER	7220180

* GUIDE ONLY

MOUNTING DISTANCE ~508 = 2ft 20W ~1110 = 4ft 40W ~1410 = 5ft 50W



Beam angle **97.4°**