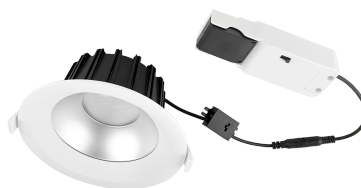


DATASHEET

MONTANA

Montana 13-17-22W LED 200mm Cutout Conn Block 3P 830-840

IP54 Low Glare LED Recessed Downlight
 White Die Cast Aluminium Bezel
 Aluminium Semi Specular Reflector



GENERAL INFORMATION	
Product Code	NMT13-17-22/CB3P/830-840
Product Range	Downlights
Product Category	Downlights
IP Rating	54
IK Rating	N/A
Warranty	7 Years
DIMENSION/WEIGHT	
Dimensions Circular (DIA x H) (mm)	DIA=Ø226, H=96
Dimensions Square/Rectangular (L x W x H) (mm)	L=0, W=0, H=0
Cut-out Size (mm)	Ø200
Product Weight (Kg)	0
CONSTRUCTION	
Body Material	PC / Die Cast Aluminium
Body Colour	White
Optical Material	N/A
Optical Finish	N/A
Termination	N/A
Driver - Intergal or Remote	Remote
PACKAGING	
Carton Dimensions (mm)	N/A
Quantity per Outer Carton	N/A
Total Weight incl. Carton (Kg)	N/A

LUMINAIRE PERFORMANCE	
Energy Rating	N/A
Luminaire Lumens (lm)	1964 / 2629 / 3215
Power Consumption (W)	13 / 17 / 22
LED Lumens (lm/W)	N/A
Efficacy (l.lm/c.W)	155 / 146 / 147
Operating Temp. (Min/Max)	-20°C to 40°C
LIGHT SOURCE	
Type	LED
Correlated Colour Temp.	3000-4000
Colour Rendering Index (CRI)	>80
Lumen Depreciation	L80 100000
SDCM	<3
ELECTRICAL INPUT	
VOLTAGE (V)	220-240V AC
Operating Frequency	50/60Hz
In Rush	N/A
Drivers per MCB*	B10=25 B16=42 C10=41 C16=69
Class	Class 2
Power Factor	N/A
Cable Entry	N/A
ELECTRICAL OUTPUT	
Forward Current (mA)	N/A
Forward Voltage (Vf)	N/A
EMERGENCY DATA	
Mode of Operation	N/A
Battery Duration	N/A
Battery Type	N/A
Battery Specification	N/A
Ballast Lumen Factor (BLF)	N/A
DIMMING	
DALI	N/A
OTHER	N/A
Switch Dim	N/A
Corridor Function	N/A
SENSORS	
Microwave	N/A
PIR	N/A
STANDARDS/APPROVALS	
CE Marked	Yes
Certificate of Conformity	Yes
Accreditations	N/A
BARCODE	
EAN NUMBER	5056673229854
E NUMBER	7029053
S NUMBER	4283831

* GUIDE ONLY

8" Fitting (13-17-22W)

