

GREENLAND LED IP66 NON-CORROSIVE LUMINAIRE INSTRUCTIONS

Issue 09 on 6th March 2021

THANK YOU for buying this product. To help ensure it gives complete satisfaction please install it according to these instructions, and then pass the instructions to the appropriate person for retention and future reference.

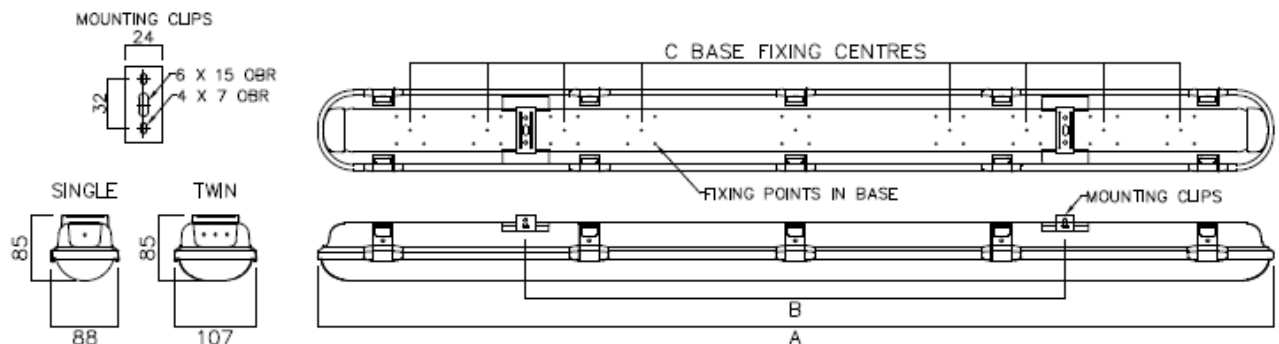
SAFETY This is a mains powered product. It is designed to be installed by suitably qualified personnel only and in accordance with the applicable building and electrical regulations. Before installation or maintenance the electrical supply to the product must be isolated.



INSTALLATION SUPPORT If installation advice or accessories are required, please contact us at the above address. We will do our best to help. When reporting a suspected fault or seeking installation support, the problem is likely to be resolved most quickly if you have full product details to-hand, as well as details of when and where it was purchased.

LUMINAIRE INSTALLATION

- Undo the clips on each side & hinge open the diffuser. The hinge is formed by two clips on one side remaining clipped to the diffuser.
- Remove the gear tray from the base by squeezing together the plastic retaining clip, then pulling on the plastic knob. Repeat at the other end. If you need to fully remove from the body then disconnect the where the strap meets the bracket in the base.
- Provide mains supply cable & decide best entry position on the base. Drill points are provided at various points (base & ends).
- Fix the base. The base is able to be fixed via the following methods; once chosen, prepare the ceiling/mounting points ensuring the fixing surface/mechanism is sufficient to support the luminaire weight & its application –



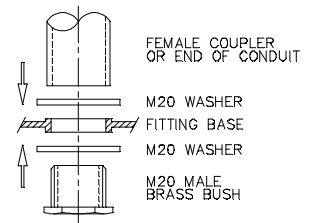
SIZE	A	B	C
1X2/2X2	640	370	440
1X4/2X4	1240	800	600/800/1000
1X5/2X5	1540	940	600/800/1000/1200
1X6/2X6	1840	1280	800/1000/1200/1400/1600

Surface fixing (using mounting clips*): Mount the two stainless steel surface mount fixing clips provided (in accessory pack) to the ceiling at the specified fixing centres (see diagram). Offer the base up to the clips & push to snap fit.

Surface fixing (without mounting clips): As the base is PC then it is possible to drill through the base & fix directly to the mounting surface. Only use the pre-moulded strengthened fixing points & care must be taken to drill a clean hole so as to not remove any of the reinforced wall around the hole.

Chain or Wire suspension: Mount the two stainless steel surface mount fixing clips to the base. Then add a V hook (provided in the accessory pack) to each of the surface mount clips. This will provide connection points for chain or wire suspension at the specified fixing centres (see diagram).

Conduit Suspension*: The base comes with specific 20mm diameter drill out points at various centres (see diagram above). These points are reinforced for conduit suspension purposes. Care must be taken to drill a clean hole & not to remove any of the reinforced wall around the hole. We recommend the following combination of parts for connection to the base (see assembly diagram to right). These parts will be available from your electrical wholesaler.



* Safety screws are provided in the accessory pack. These can be fed through the clips & tightened to fix in a closed position.

- Route the mains supply cable into the base. It is the installer's responsibility to ensure the IP66 rating is maintained. An IP66 cable gland is provided in the luminaire accessory pack.
- If gear tray was fully removed, refit on to the retaining straps on to the gear tray brackets in the base.
- Route the mains supply cable to the terminal block & terminate, ensuring correct polarity is observed.

NOTE! THIS LUMINAIRE MUST BE EARTHED.

- Fully locate the gear tray into the base by aligning the slots with the clips in the base & pushing in secure.
- Fit the controller by hinging back into position & securing using the snap-fit clips.
- If vandal resistance is required, fit the small screws provided (in the accessory pack) into each clip.
- Reconnect power supply & check for correct operation.

Note! Luminaires fitted with electronic drivers are exempt from insulation resistance tests, as this may cause irreparable damage & would void warranty.

MAINTENANCE

Cleaning should be carried out at regular intervals so as not impair photometric performance or thermal safety of the luminaire.