

RANGER LED BATTEN LUMINAIRE INSTRUCTIONS

Issue 01 January 2026

Thank you for your purchase

For best results, have this light fitting installed by a qualified electrician, following these instructions. Keep this leaflet for future reference.

Safety

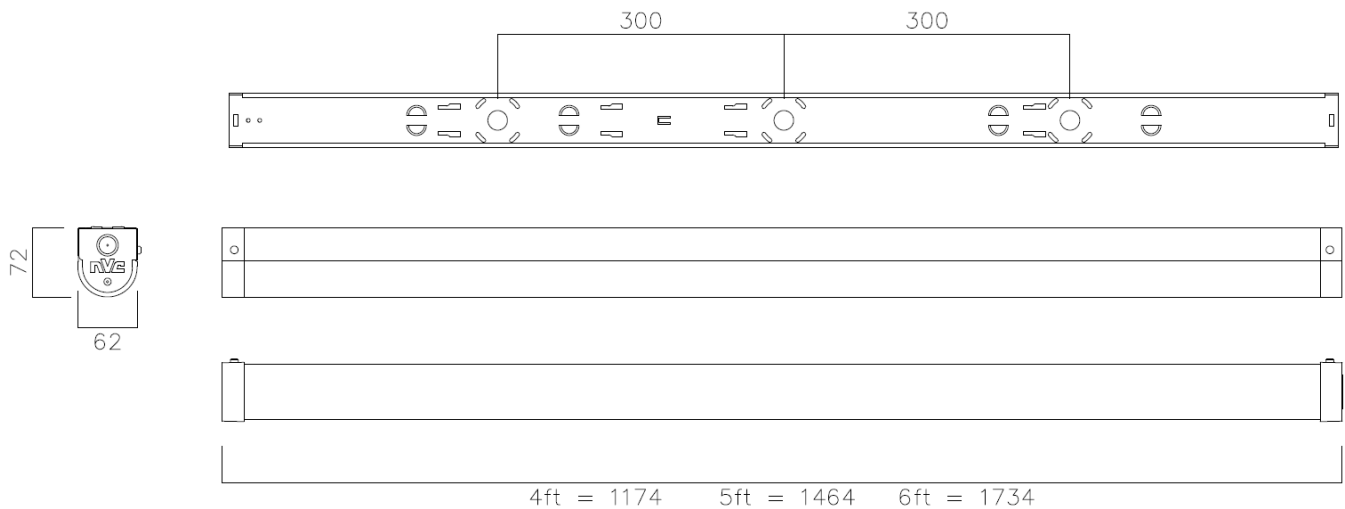
- Mains powered – installation must comply with building and electrical regulations.
- Always switch off and isolate the power before installation or maintenance.



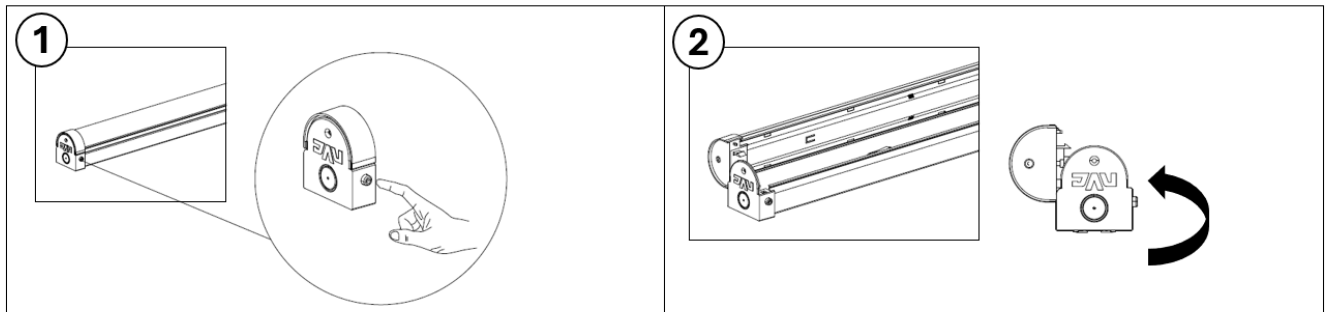
Need Help?

For advice or accessories, contact us at the address above. Please have the product name, model, and purchase details ready.

DIMENSIONS

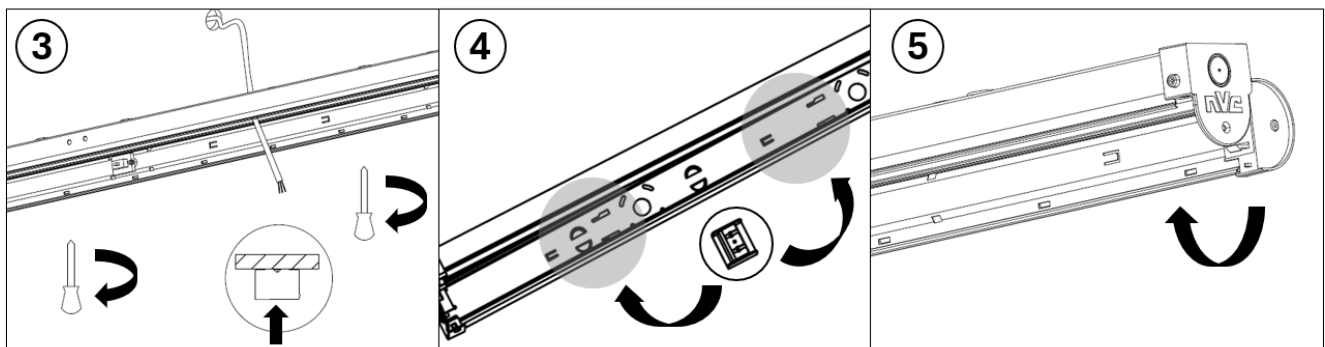


INSTALLATION



Push endcap buttons to open fitting.

Hinge body open for installation.



Use BESA fixing points for your appropriate fixing method, push cables through back entry on fitting as required.

Move terminal block to desired mounting location and secure mains cables.

Close hinged cover. Optional safety screw provided to add to endcaps for extra security.

NOTES / MAINTENANCE

1. This luminaire must be earthed.
2. For end conduit entry, drill appropriate size hole in defined position.
3. Luminaires fitted with electronic drivers are exempt from insulation resistance tests, as this may cause damage to the driver
4. Cleaning should be carried out at regular intervals so as not impair

POWER ADJUSTMENT TABLE

	WATTS	LUMENS	Dip Switch 1	Dip Switch 2
NRG4/18-34/830-40-60	18	2716	OFF	OFF
	24	3629	ON	OFF
	28	4186	OFF	ON
	34	4999	ON	ON
NRG5/29-52/830-40-60	29	4318	OFF	OFF
	37	5501	ON	OFF
	44	6449	OFF	ON
	52	7352	ON	ON
NRG6/31-62/830-40-60	31	4888	OFF	OFF
	37	6317	ON	OFF
	52	7678	OFF	ON
	62	8695	ON	ON

GENERAL MAINTAINED EMERGENCY LUMINAIRE INSTRUCTIONS

These instructions should be followed in conjunction with the standard luminaire instructions. Please read carefully and pass to the end user/responsible person for retention and future reference.

INSTALLATION

1. Following the installation of the luminaire in accordance with the standard luminaire installation instructions, a separate permanent live supply should be terminated in the incoming supply terminal block in the luminaire, in the connection marked 'L PERM'. The permanent supply MUST be taken from the same phase as the corresponding switched supply and MUST be wired at the switchboard so that upon instances of tests, it is isolated at the same time as the switched supply.
2. Once the permanent live supply is connected, connect the battery to the module via the 'plug and mate' connector, ensuring correct polarity is observed. Failure to observe correct battery polarity will result in permanent damage to the emergency module/driver.
3. N.B. to avoid potential damage to the battery please ensure the permanent live is energized as soon as possible following connection of the battery to the module.
4. Upon restoration of the power supply to the luminaire, check that the indicator LED fitted within the luminaire illuminates green. This indicates that the batteries are charging and that the charging circuit is healthy.
5. Allow the battery to charge for an uninterrupted period of not less than 24 hours prior to carrying out a full discharge test.

MAINTENANCE

6. The battery pack in this luminaire must be replaced when it is no longer able to satisfy its full rated duration.
7. In emergency mode the light level of the luminaire will be at a reduced output. Regular maintenance and gentle cleaning are recommended so as to ensure that the Emergency Output Factor (E.O.F) remains at specified levels.
8. Isolate the supply before servicing.
9. Please ensure that the emergency flux is not compromised at any time throughout the design life of the luminaire.
10. **DO NOT INSULATION TEST**

Caution:

The battery pack in this luminaire is a Lithium Iron Phosphate (LiFePO₄) type which includes a dedicated protection circuit. If replacing the battery pack, the specification and chemistry must be identical to that detailed on the battery label.

TESTING OF EMERGENCY LUMINAIRES:

Recommended routine test procedures in line with BS 5266-1:2016 & BS EN 50172:2004.

For Self-test Versions see below:

Self-Test Operation: On connection of a permanent live supply, the unit will enter an automatic commissioning cycle as detailed in the table below. During this cycle, the permanent live supply should not be interrupted as this will result in the charging timer resetting to zero and restarting the commissioning process. Following successful completion of the commissioning cycle, in line with BS EN 62034 and BS EN 50172:2004, the unit will perform a 30 second function test automatically at monthly intervals for 11 months, and in the 12th month, a full rated duration test will be performed.

LED Status Indicator during commissioning:

LED Indication	Stage / Period	Status
Green Permanently On	1 – 24h	Initial Battery Charge
Green Slow Flash (2s on / 2s off)	2 – Rated Duration	Duration Test
Green Slow Flash (4s on / 1s off)	3 – 24h	Battery Recharge and test passed
Green Permanently On	4 – Normal Operation	Commissioning Complete

LED Status Indicator following commissioning:

LED Indication	Status
Green Permanently On	Normal, Commissioned, Standby Mode
Green Slow Flash (2s on / 2s off)	Function Or Duration Self-Test in Progress
Green Slow Flash (4s on / 1s off)	Battery Recharge (24h Following Duration Test) and test passed
Red Fast Flash (0.5s on / 0.5s off)	Battery Disconnected, Battery Duration Fault, Lamp Fault

Notes on Fault Code:

The unit monitors health/status in both standby (charging), and self-test modes. If the battery is disconnected in standby mode, the LED indicator will 'fast flash red', as in the table above. On re-connection of the battery, the LED indicator will revert to green. If the unit detects a fault to either the battery or lamp head during a test, it will 'fast flash red', and remain in this status until the fault is fixed and the unit has completed a further successful test.

Note: In order to maintain compliance of the self-test system, the unit is factory set to undertake tests randomly. Because of this, tests may occur at any time in the 30-day interval period. Caution should be exercised where this may be inconvenient, or cause disturbance, such as in hospitals, nursing homes and other premises with sleeping accommodation.